

Boulder Warehouse For Lease

1812 VALTEC LANE | BOULDER, CO 80301

Suite 4

Unit Size: 1,500 SF

Rate: \$13.50/SF + NNN (\$6.20/SF)

Zoning: Industrial

Available: May 1, 2023

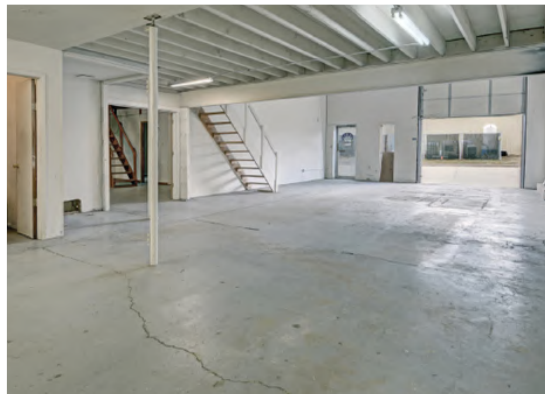


SMALL SPACE, BIG DREAMS

This warehouse space is the perfect solution for all your business needs, featuring a 12' overhead door and three parking spaces for easy access. Plus, the mezzanine level provides additional storage space for your inventory or equipment. Whether you're a small business owner, contractor, or hobbyist, this property is the perfect place to grow and expand your business. And with its Boulder location, you'll be in the heart of the action!

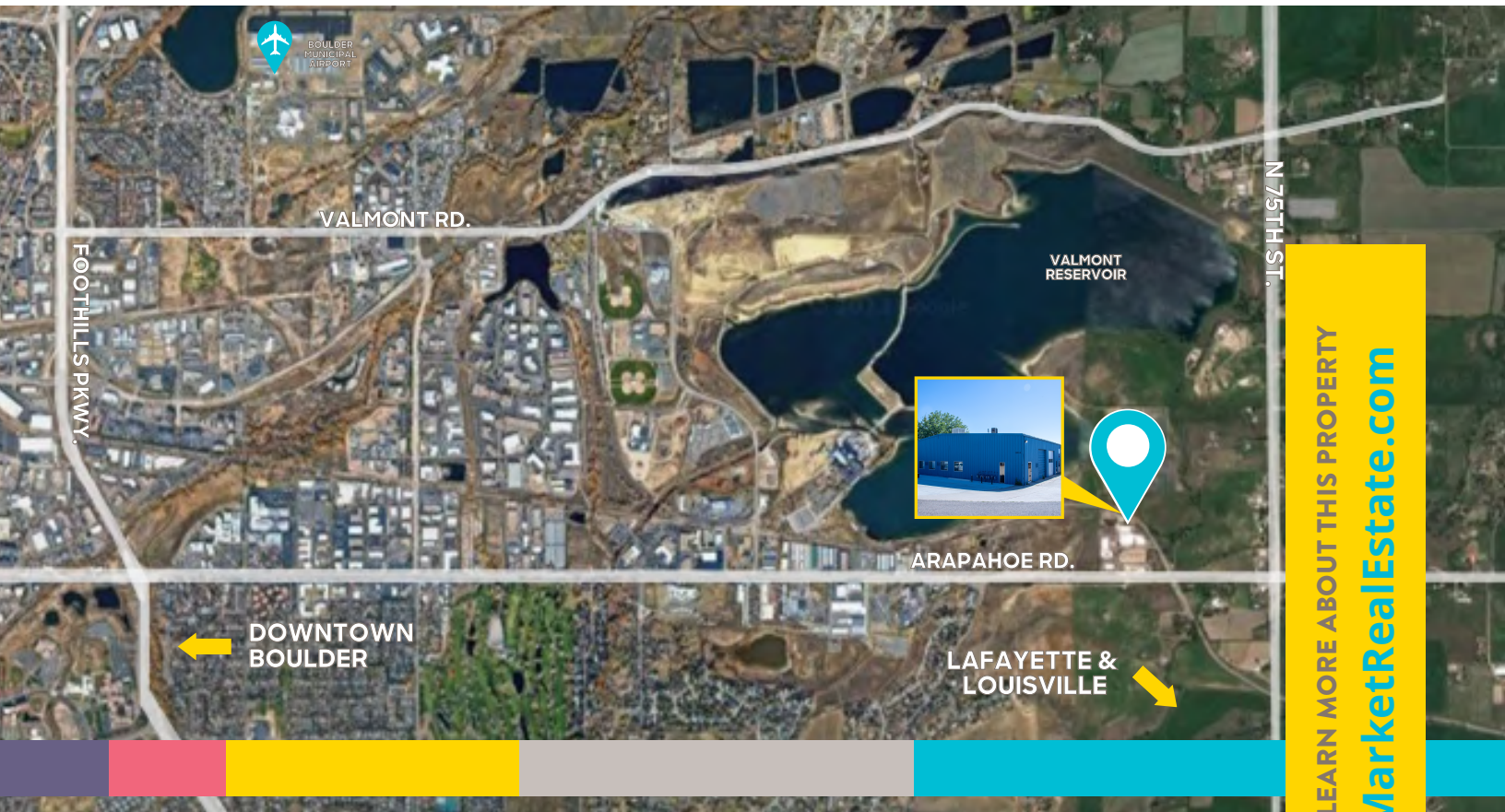
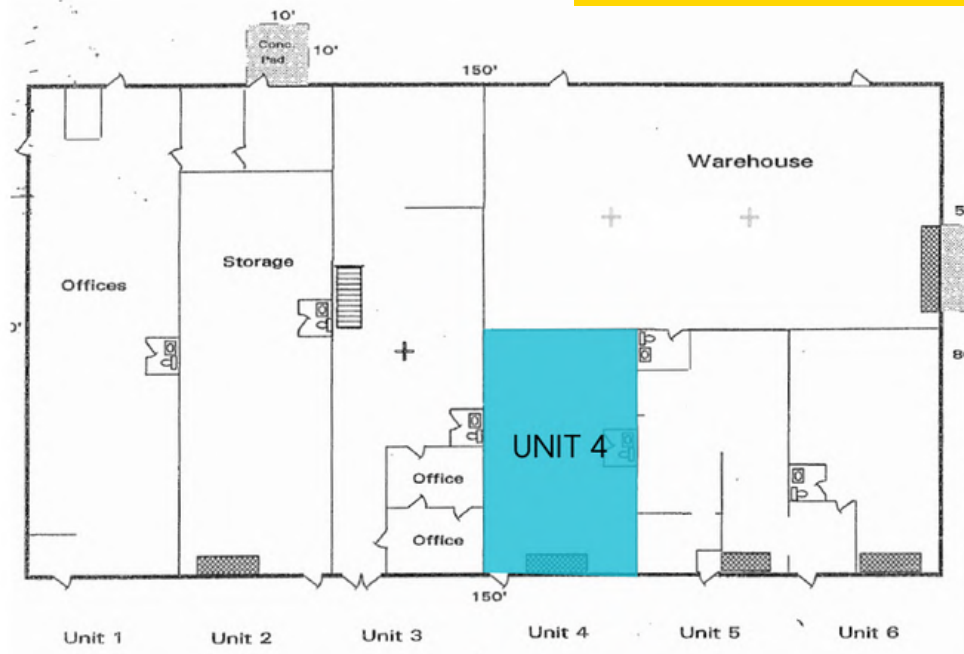
PROPERTY HIGHLIGHTS

- Small warehouse space for your small business needs
- 12' overhead door
- Three parking spaces
- Mezzanine great for storage needs



LEARN MORE ABOUT THIS PROPERTY

MarketRealEstate.com



LEARN MORE ABOUT THIS PROPERTY
MarketRealEstate.com

BRITTANY BOUDREAU
303 444 0566
Brittany@MarketBoulder.com

HEIDI SCHAMBER
303 444 4344
Heidi@MarketBoulder.com

