

## Perfect-Sized Suite in Busy Retail Center

**956 W. CHERRY ST | LOUISVILLE, CO 80027**  
UNIT 105

Size: 982 SF

Rate: \$25/SF + \$15.28 NNN

Available Now

# RETAILER'S PARADISE

Do you hear that? It's probably just your cash register ringing in anticipation of you leasing this location-loaded retail suite in Louisville. It's fully multifunctional and ready to mark the spot for your budding business. And with neighbors like these, customers are bound to come knocking. Pizza, coffee and chiropractic (the survival trifecta for a long day of shopping and carrying heavy bags) are all just steps away.

### PROPERTY HIGHLIGHTS

- Perfect-sized end unit
- Lots of light from big store-front windows
- Monument and suite signage
- Newly remodeled shared restrooms
- Ample customer and employee parking

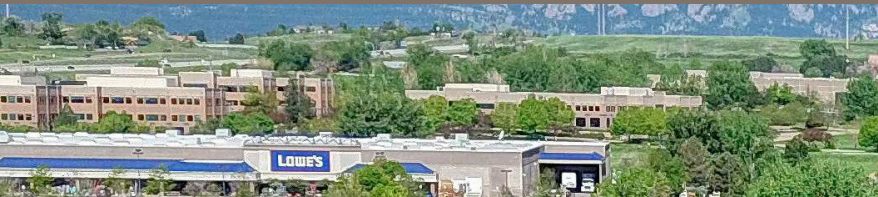


**CLICK HERE**  
for virtual tour



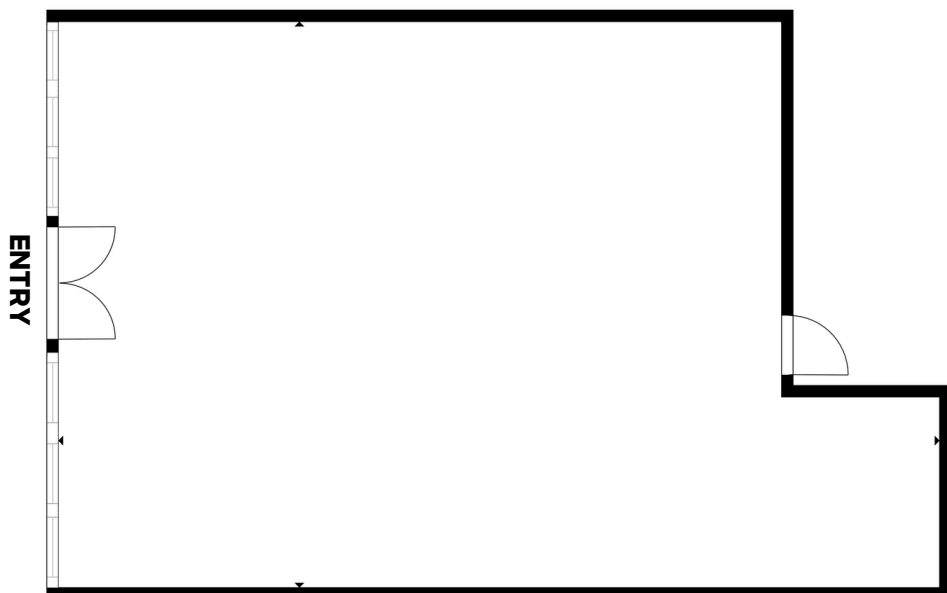
LEARN MORE ABOUT THIS PROPERTY  
**MarketRealEstate.com**





# market

REAL ESTATE



**CLICK HERE**  
for virtual tour



**HEIDI SCHAMBER**

303 444 4344

Heidi@MarketRealEstate.com

**BRITTANY BOUDREAU**

303 444 0566

Brittany@MarketRealEstate.com

LEARN MORE ABOUT THIS PROPERTY

**MarketRealEstate.com**

