

Warehouse Space For Lease in Boulder

5565 ARAPAHOE RD | BOULDER 80302
SUITE I

Size: 3,393 SF

Rate: \$12 NNN (\$6.98)

Available: Now

WIDE OPEN WAREHOUSE

Get your business all the square feet it needs in this large-and-in charge warehouse space. Built out with 2 offices in the front and the rest open warehouse, this space is exactly what you have been looking for. The overhead door lets in light and fresh air, making it an epic fit. Plus, the large amount of on-site parking makes it everything you have been dreaming of.

PROPERTY DETAILS:

- 2 offices and mezzanine space
- Easy onsite parking
- Central Boulder location
- High ceilings and grade-level overhead door

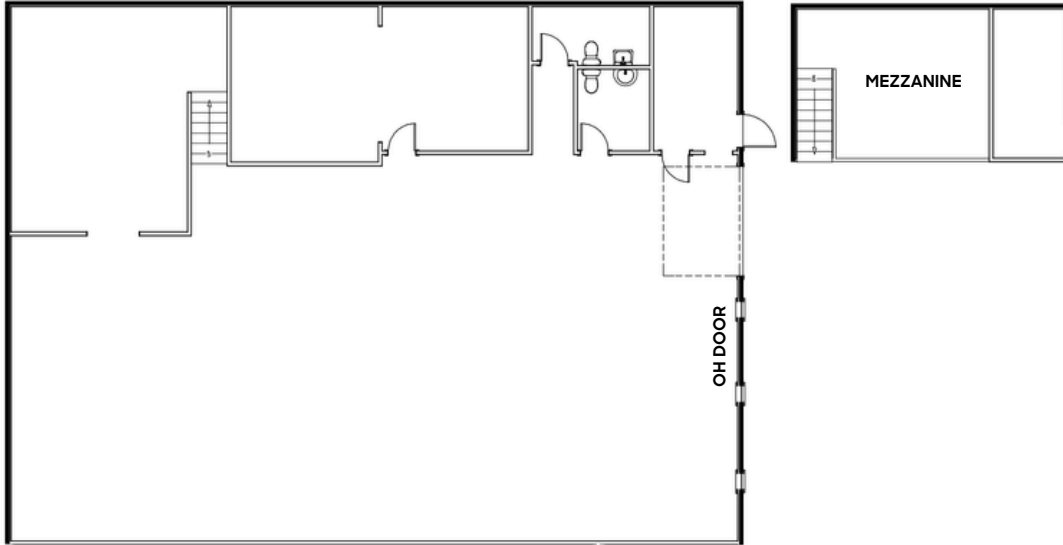


LEARN MORE ABOUT THIS PROPERTY

MarketRealEstate.com

market

REAL ESTATE



LEARN MORE ABOUT THIS PROPERTY
MarketRealEstate.com

NATE LITSEY
 303 444 4024
 Nate@MarketRealEstate.com

TODD WALSH, CCIM
 303 444 5040
 Todd@MarketRealEstate.com

