

## SE Boulder Office/Medical Suites for Lease

4790 TABLE MESA DR | BOULDER, CO 80305  
Zoning: MR-D

### UNIT #108

Size: 1,425 SF  
Rate: \$3,200/Mo  
Available: Now

### UNIT #200

Size: 2,791 SF  
Rate: \$7,500/mo  
Available: Now

# REAL GEMS

Unearth the perfect setting for your next venture! These small suites offer clean lines, versatile layouts, and a perfect blend of open space and private offices—ideal for your practice or firm. With a prime location, secure ample parking, and a sophisticated ambiance, this opportunity combines convenience with a touch of class.

## PROPERTY HIGHLIGHTS

- Suite 108: Ground floor suite with 4 private offices, waiting room and kitchenette
- Suite 200: Large bullpen, 3 private offices, wrap around patio with mountain views
- Secure parking, elevator access, and great location



[CLICK HERE](#)  
for 108 virtual tour

SUITE 108



[CLICK HERE](#)  
for 200 virtual tour



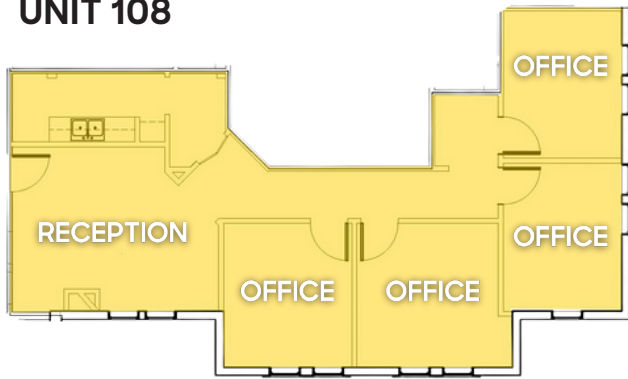
SUITE 200



LEARN MORE ABOUT THIS PROPERTY  
[MarketBoulder.com](https://MarketBoulder.com)



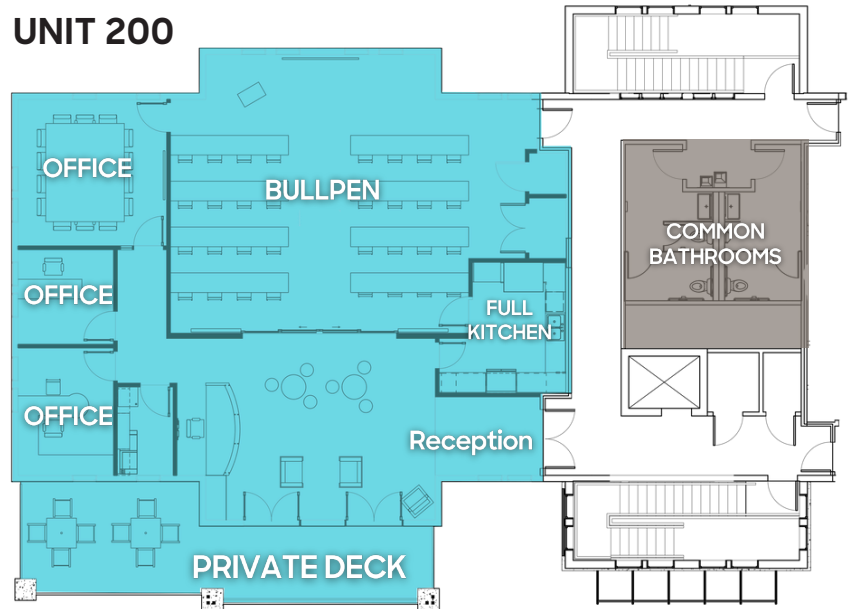
## UNIT 108



[CLICK HERE](#)  
for 108 virtual tour

[CLICK HERE](#)  
for 200 virtual tour

## UNIT 200



LEARN MORE ABOUT THIS PROPERTY  
[MarketBoulder.com](http://MarketBoulder.com)

**HEIDI SCHAMBER**  
303 444 4344  
Heidi@MarketBoulder.com

**RACHEL ROHRIG**  
303 444 4910  
Rachel@MarketBoulder.com