

Lafayette Commons For Lease: Retail/Office

400 E. SIMPSON ST | LAFAYETTE, CO 80026

SUITE 100

Size: 1,306 SF
Rate: \$2,600/mo modified gross
Available: Now

SUITE 105

Size: 203 SF
Rate: \$900/mo modified gross
Available: Now

SUITE 106

Size: 197 SF
Rate: \$900/mo modified gross
Available: Now

FLEX ON 'EM!

And do it in this versatile service retail or office space in downtown Lafayette with open floor plan, kitchenette, private entrance, and on-site parking. Wait, is “on-site parking” kind of a weird flex? But OK – get this: it’s also right around the corner from good eats and great brews (coffee... or beer!) And, if that’s not enough for you, head to the on-site fitness room to build up a little flex of your own. Even if that’s not your thing, we think that once you experience the wood, warmth, and natural light you’ll see that this location really is built different.

PROPERTY HIGHLIGHTS

- Great location in downtown Lafayette near a variety of restaurants
- Charming and quiet building with direct access to Simpson Street
- Access to a conference room, kitchenette, and fitness center
- On-site parking

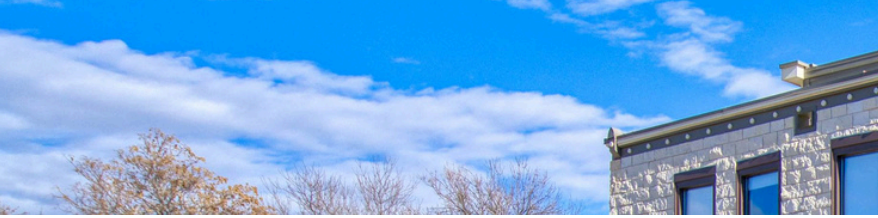


[CLICK HERE](#)
for Ste. 105 virtual tour

[CLICK HERE](#)
for Ste. 106 virtual tour

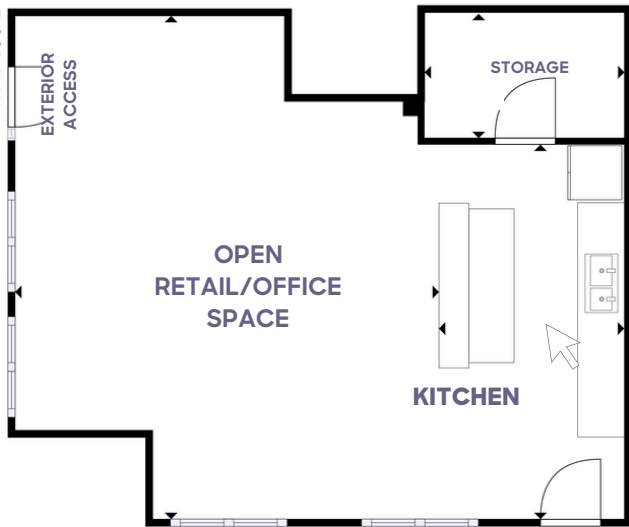


LEARN MORE ABOUT THIS PROPERTY
MarketRealEstate.com



market

REAL ESTATE



SUITE 100



CLICK HERE
for Ste. 105 virtual tour

SUITE 105



CLICK HERE
for Ste. 106 virtual tour

SUITE 106



LEARN MORE ABOUT THIS PROPERTY
MarketRealEstate.com

HEIDI SCHAMBER
303 444 4344
Heidi@MarketRealEstate.com

BRITTANY BOUDREAU
303 444 0566
Brittany@MarketRealEstate.com