

Office Suites With Flatiron Views

3300 ARAPAHOE AVE/BOULDER, CO 80303

Suite Size 338-360 SF
Rate \$775-\$795 per month
Available 30 days

ALL THE GOOD FEELS

It is hard to have a bad day while working in a quiet, second-story office with clear views of the Flatirons. Take time between tasks to soak up vistas of the "Chautauqua Slabs", as they once were known, or head across the street for countless dining and shopping options. Two offices are available in this 540 square foot suite, but with easy parking and a central Boulder location, don't expect them to last very long.

PROPERTY HIGHLIGHTS

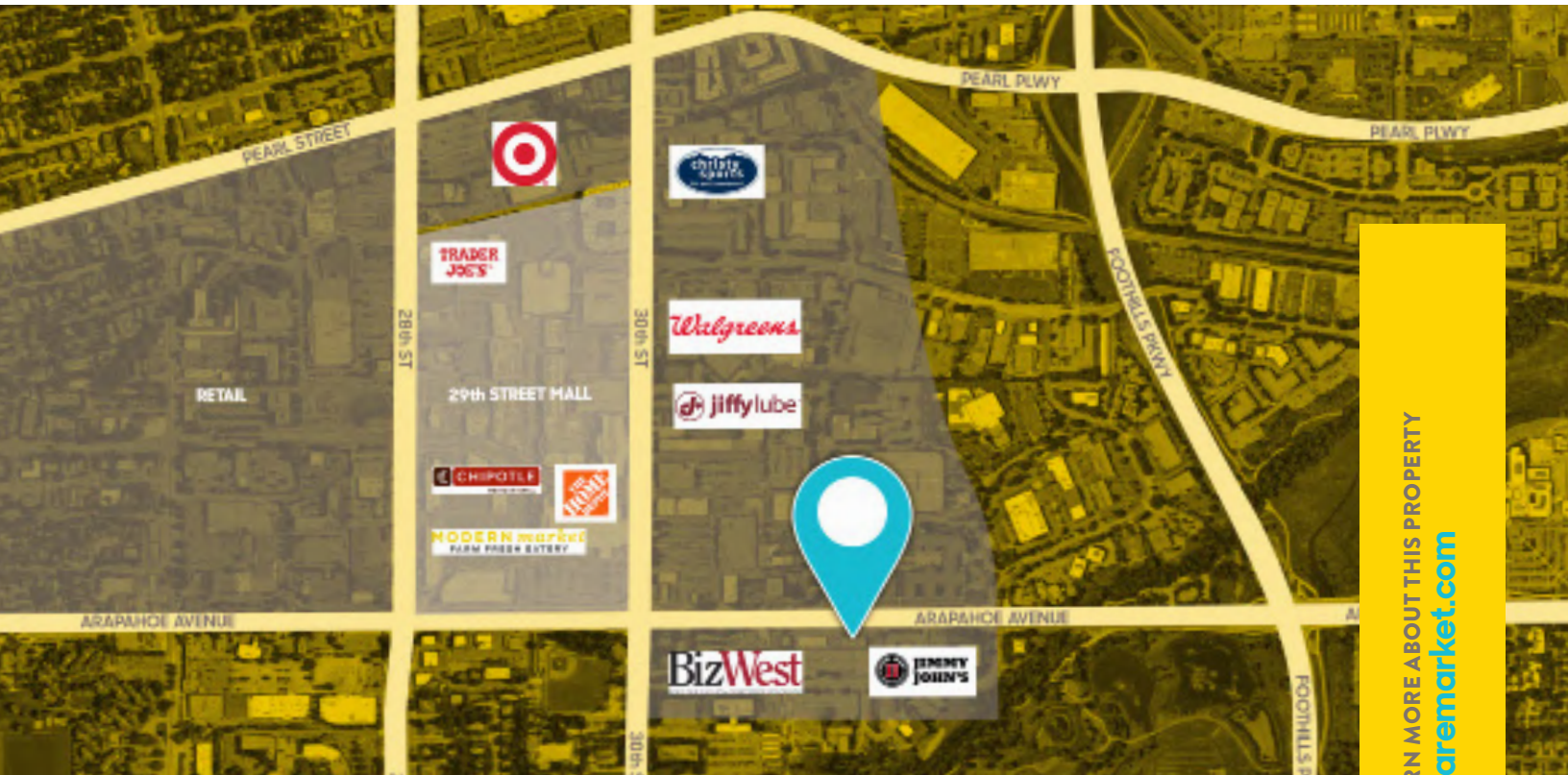
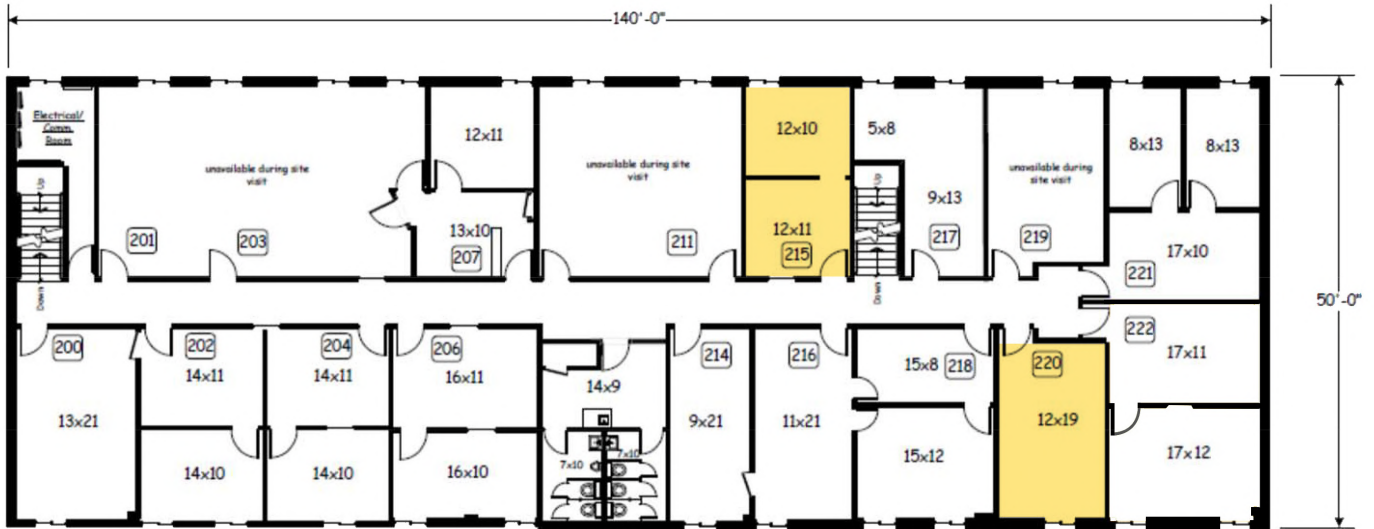
- Flatirons views
- Gross lease rate
- Close to the 29th Street Mall
- Onsite parking available



LEARN MORE ABOUT THIS PROPERTY
wearemarket.com



©2018 TODD WALSH CCIM.
DISCLAIMER: The information contained herein has been obtained from sources believed reliable. While we do not doubt its accuracy, we have not verified it and make no guarantee, warranty or representation about it. It is your responsibility to independently confirm its accuracy and completeness.



LEARN MORE ABOUT THIS PROPERTY
wearemarket.com

TODD WALSH, CCIM

303 444 5040 todd@wearemarket.com

LAURA FRENKEL

303 444 4994 laura@wearemarket.com

