

Boulder Office Space For Sublease

2805 WILDERNESS PL | BOULDER, CO 80301
Suite 100

Size: 1,945 SF

Rate: \$18.00 NNN

Available Date: Immediately

Current term date ends 10/31/26

FORM & FUNCTION

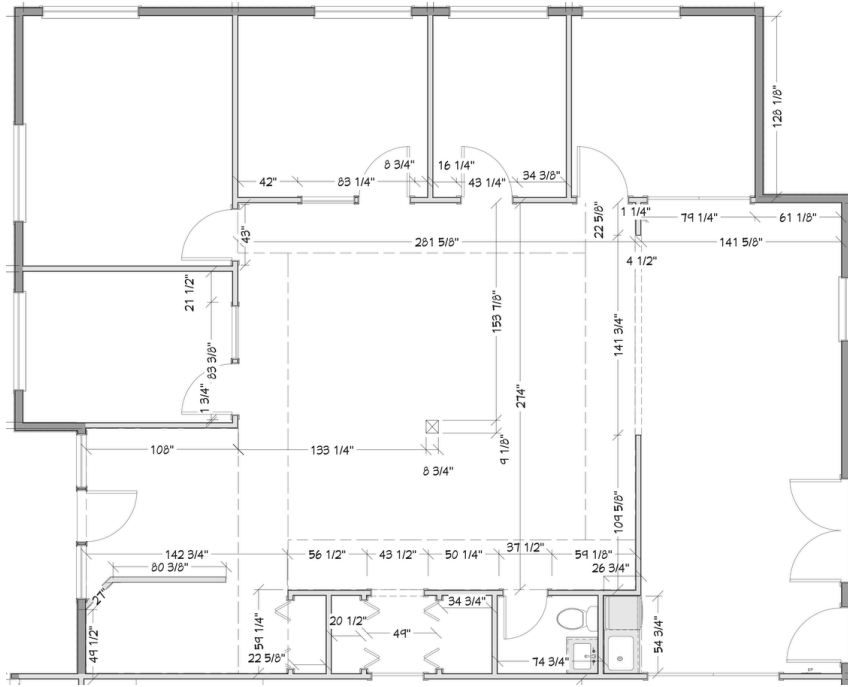
This thoughtfully curated office, originally built out by an interior design group, blends form and function effortlessly. Private offices with big, bright windows? Check. Open workspace for collaboration? Absolutely. Smart storage and a kitchenette for all the little details that make a workday smoother? You bet. With double doors for easy loading and an atmosphere that just works, this space is move-in ready and undeniably polished.

PROPERTY HIGHLIGHTS

- Updated Finishes
- Ideal layout: single private offices with windows, open space, storage
- Double doors for loading
- Kitchenette/break area



LEARN MORE ABOUT THIS PROPERTY
MarketRealEstate.com



LEARN MORE ABOUT THIS PROPERTY
MarketRealEstate.com

ANNIE LARNER

303 444 1344 Annie@MarketRealEstate.com

