

# market

REAL ESTATE

## Retail Space for Lease in Boulder

**1926 14TH ST | BOULDER 80302**  
SUITE 100

Size: 956 SF

Rate: \$30 NNN / \$16 OpEx

Available: Now

# STEPS FROM SUCCESS

Step into the retail limelight with this prime 956 SF space, just a hop, skip, and a jump from the bustling Pearl Street Mall bricks. Enjoy unparalleled visibility in a downtown location that's the heartbeat of Boulder. Surrounded by amazing retail neighbors, this spot is your perfect canvas to captivate customers and be part of the vibrant retail mix.

### PROPERTY DETAILS:

- Great downtown Boulder location
- Huge visibility just steps from Pearl Street
- Small versatile retail space
- Free basement storage space
- Surrounded by shops & vibrant neighbors



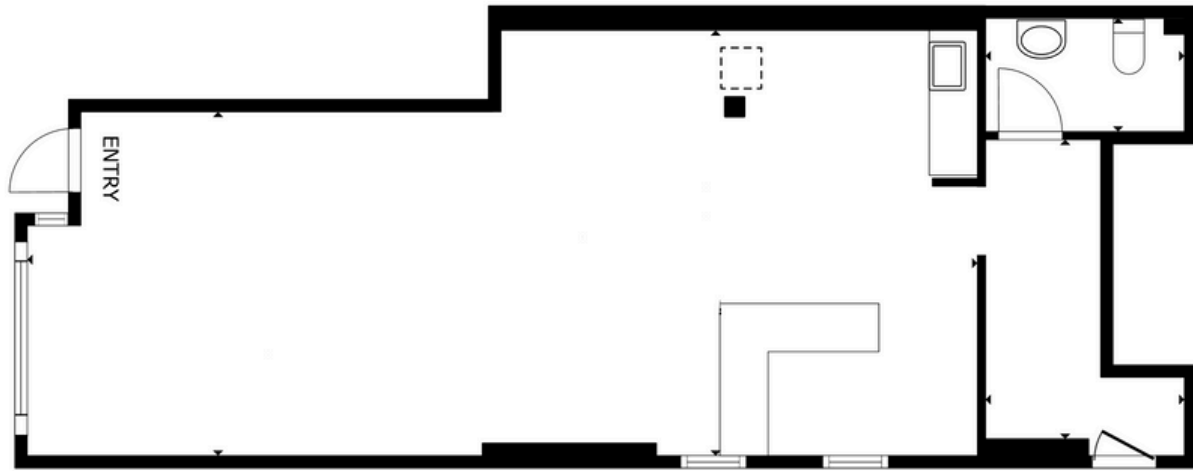
LEARN MORE ABOUT THIS PROPERTY  
[MarketRealEstate.com](https://MarketRealEstate.com)





# market

REAL ESTATE



[CLICK HERE](#)  
for virtual tour



**NATE LITSEY**

303 444 4024

Nate@MarketRealEstate.com

**TODD WALSH, CCIM**

303 444 5040

Todd@MarketRealEstate.com

LEARN MORE ABOUT THIS PROPERTY  
[MarketRealEstate.com](https://MarketRealEstate.com)

