

## Insutrial Space on Main Street

**1401 MAIN STREET | LONGMONT, CO  
UNIT B**

Unit Size 1,450 SF  
Rate \$20.00/SF Gross  
Available 30 Days

# WE SEE YOU THERE

You're browsing listing after listing of ho-hum spaces and same-ol' places. Well, we could tell you that this one's different—that its warehouse will blow your mind to next Tuesday. But we're not maniacs. We're brokers, and we're here to give it to you straight. This sweet spot is flexible (industrial or retail), has direct Main St. exposure, and it got you to stop scrolling. That's worth at least a phone call.

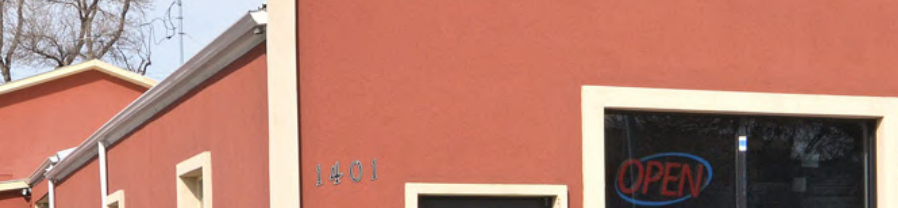
### PROPTERY HIGHLIGHTS

- Open Warehouse Space
- Prime Main Street Location
- Awesome Retail Exposure
- Plenty of Parking
- Mighty Fine Signage



LEARN MORE ABOUT THIS PROPERTY  
[wearemarket.com](http://wearemarket.com)

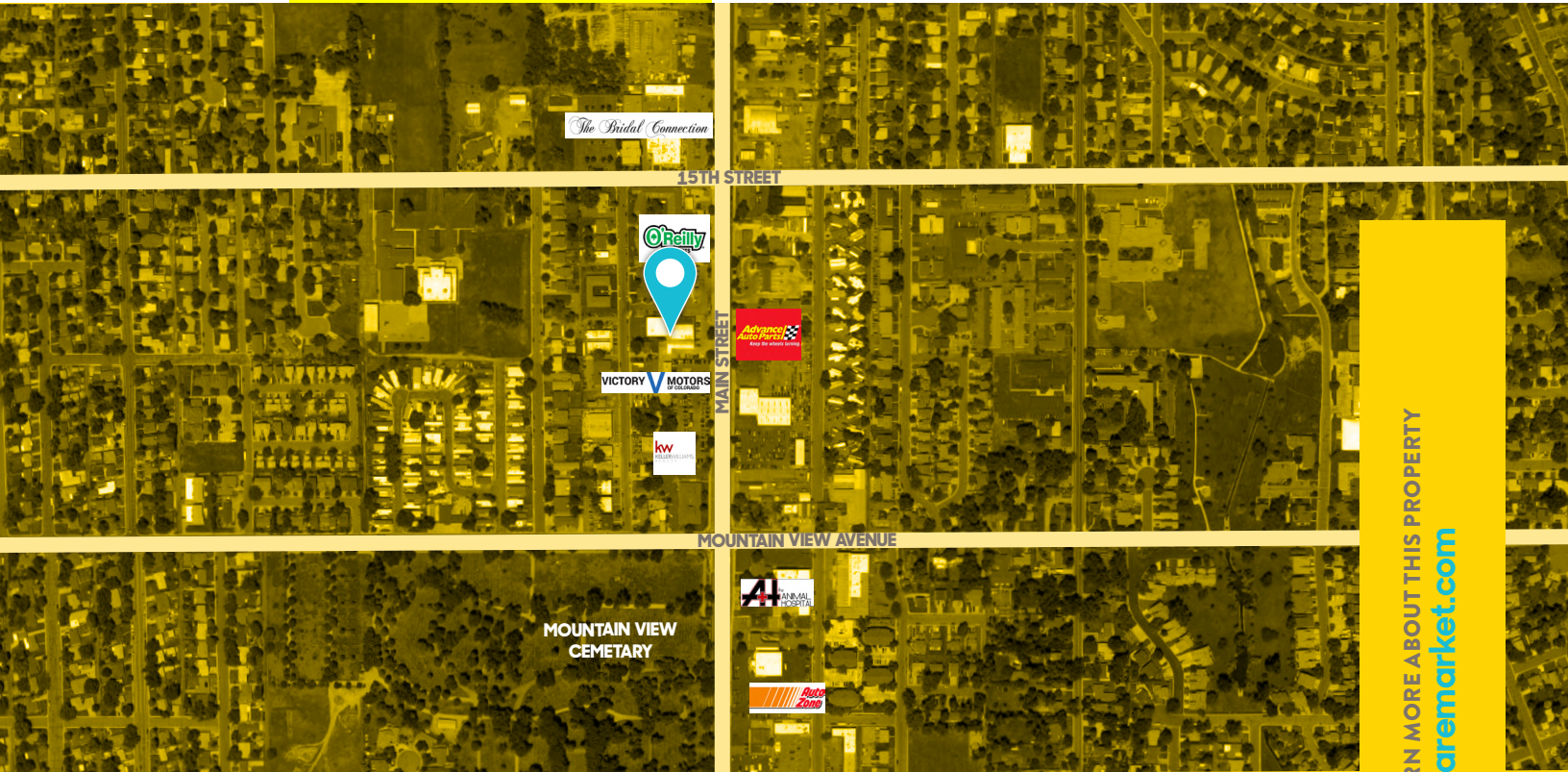
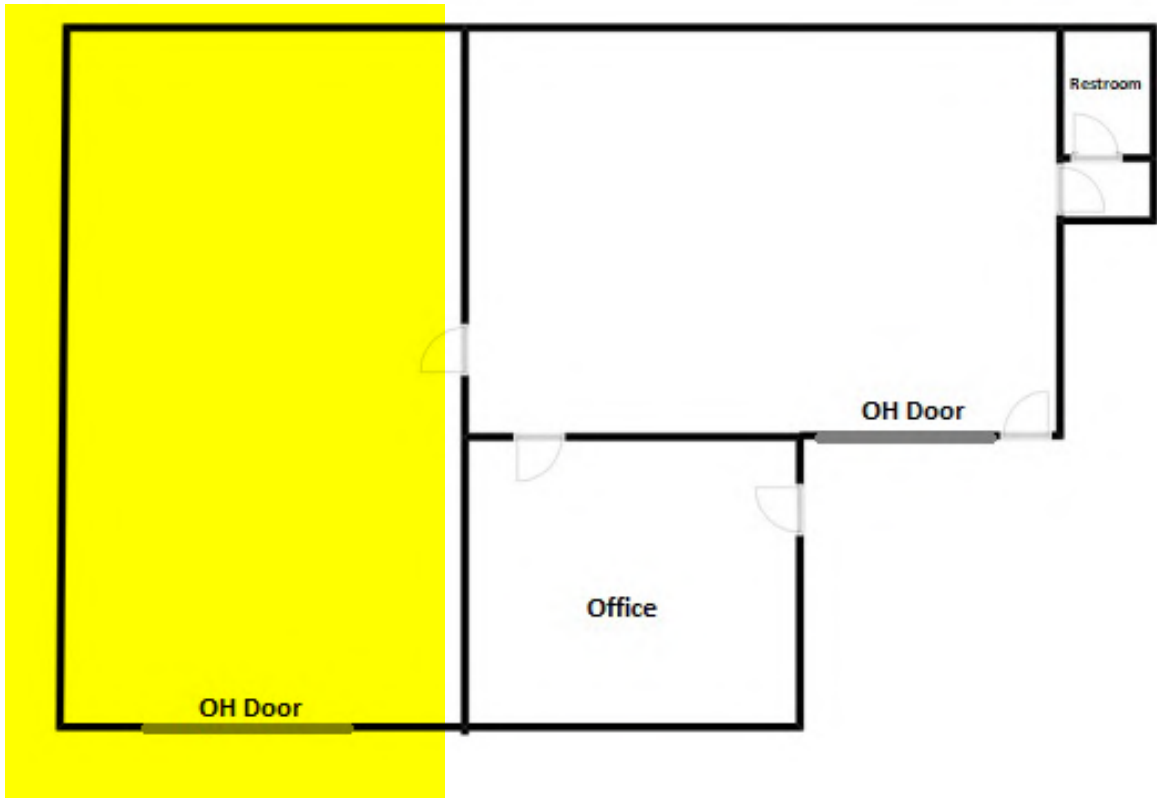




# market

REAL ESTATE

©2018 TODD WALSH CCIM.  
DISCLAIMER: The information contained herein has been obtained from sources believed reliable. While we do not doubt its accuracy, we have not verified it and make no guarantee, warranty or representation about it. It is your responsibility to independently confirm its accuracy and completeness.



LEARN MORE ABOUT THIS PROPERTY  
[wearemarket.com](http://wearemarket.com)

**TODD WALSH, CCIM**  
303 444 1234 [todd@wearemarket.com](mailto:todd@wearemarket.com)

**RACHEL COHEN**  
303 931 7742 [rachel@wearemarket.com](mailto:rachel@wearemarket.com)

