

1345 PLAZA COURT

LAFAYETTE, CO

LEASE RATE

\$8,495/mo gross
(including NNN expenses and utilities)

SIZE

3,456 SF

ZONING

OFFICE

Units 1A, 1B, 2A
AVAILABLE FOR
PURCHASE
\$1,495,000

PRIVATE OFFICES AVAILABLE FOR
LEASE
\$975+ / mo gross

WORK, PLAY, REPEAT

With easy commuter access, this office space offers just what you need to hunker down and get work done. Whether you're tackling tasks or brainstorming big ideas, you'll love the ample natural light that pours in, filling your workspace with positivity. Take a break and step out to one of the outdoor patios to recharge—perfect for lunch or just catching a quick breath of fresh air. Inside, you'll find a clean, modern space designed to make your workday smoother, with a shower for your midday workout or post-lunch energy boost.

PROPERTY DETAILS:

- Private entrances
- Kitchen, conference room, and restroom with a shower
- Abundant Parking
- Close to Hwy 287

**LAFAYETTE OFFICE SPACE
FOR SALE OR LEASE**

RACHEL ROHRIG

303 444 4910

Rachel@MarketRealEstate.com

BRITTANY BOUDREAU

303 444 0566

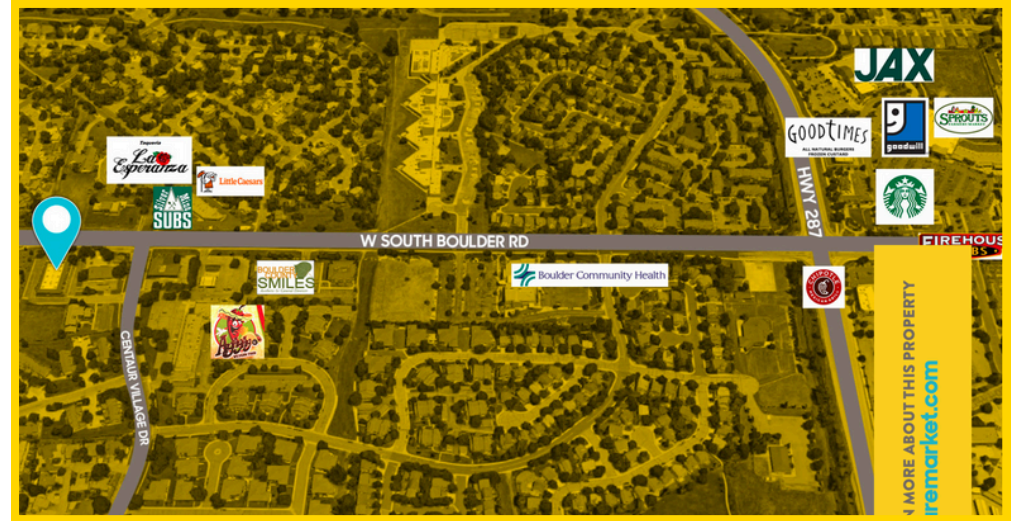
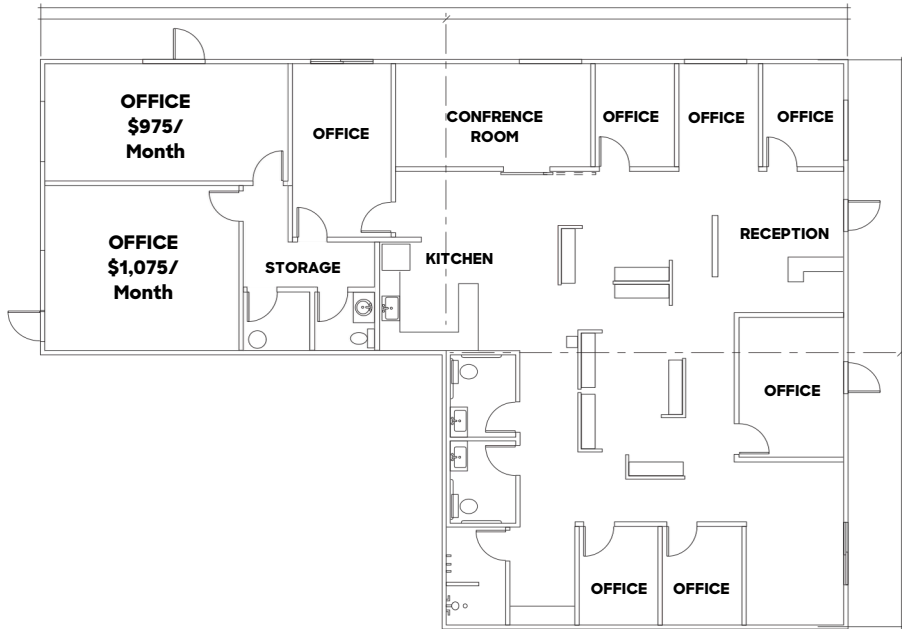
Brittany@MarketRealEstate.com

LEARN MORE ABOUT THIS PROPERTY
[MarketRealEstate.com](https://www.MarketRealEstate.com)



1345 PLAZA COURT

LAFAYETTE, CO



RACHEL ROHRIG

303 444 4910

Rachel@MarketRealEstate.com

BRITTANY BOUDREAU

303 444 0566

Brittany@MarketRealEstate.com

LEARN MORE ABOUT THIS PROPERTY
MarketRealEstate.com