

Boulder Retail Space For Lease

1100 SPRUCE STREET | BOULDER, CO 80302
SUITE 102

Size: 991 SF

Rate: Negotiable

Date Available: Now

POP IN POTENTIAL

Just a block off Pearl and nestled up against a super-convenient public parking garage, this first-floor retail space checks all the boxes: high visibility, easy access, and a City of Boulder landlord who keeps things grounded (in a good way). Surrounded by over 1,000 businesses and a year-round backdrop of flowers and foot traffic, it's the kind of place people don't just pass by—they pop in.

PROPERTY HIGHLIGHTS

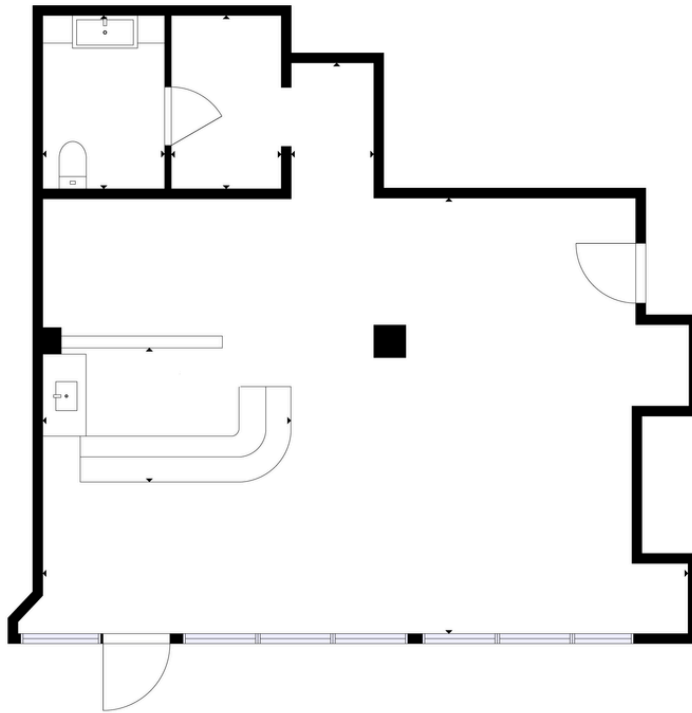
- Open floor plan
- Flexible lease terms
- Connected to a City parking garage



CLICK HERE
for virtual tour



LEARN MORE ABOUT THIS PROPERTY
MarketRealEstate.com



CLICK HERE
for virtual tour



NATE LITSEY
303 444 4024
Nate@MarketRealEstate.com

TODD WALSH, CCIM
303 444 5040
Todd@MarketRealEstate.com

LEARN MORE ABOUT THIS PROPERTY
MarketRealEstate.com

