

## Turn-Key Medical Office Suites for Lease

**1044 88TH STREET | LOUISVILLE, CO 80027**  
SUITES 100, 102 & 105

100: 1,321 SF

102: 1,605 SF

105: 2,161 SF

Rate: \$19.00 NNN

Available Immediately

# WHAT'S YOUR ANGLE?

For us, it's these medical suites located at 1044 S 88th Street in Louisville. These turn-key suites are ready for new tenants to take their attractive layouts to the next level. They are perfect for any providers or practitioners looking for space in a med-friendly building which just so happens to be a stone's throw to Avista Hospital and other medical offices. No funny business in this fabulously located building, we promise—just a couple of great spaces waiting for a couple of great tenants.

### PROPERTY HIGHLIGHTS

- Great Louisville location
- Zoned for medical use
- Turn-key medical offices ready for move in now
- Offers ample parking for patients



**CLICK HERE**  
for 100 virtual tour

**CLICK HERE**  
for 102 virtual tour

**CLICK HERE**  
for 105 virtual tour

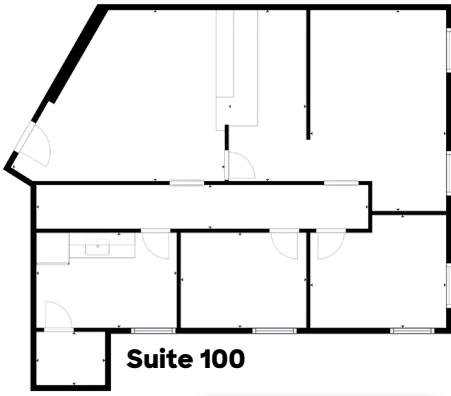


LEARN MORE ABOUT THIS PROPERTY  
[MarketRealEstate.com](https://MarketRealEstate.com)



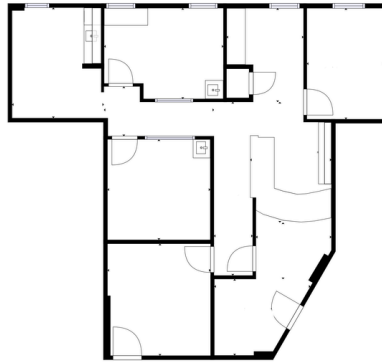
# market

REAL ESTATE



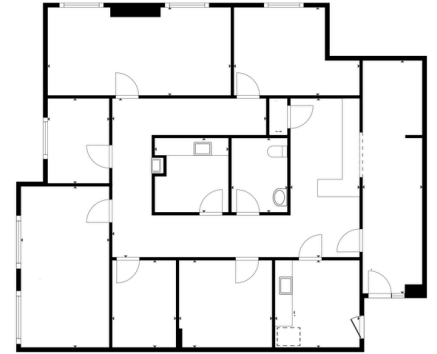
Suite 100

[CLICK HERE](#)  
for 100 virtual tour



Suite 102

[CLICK HERE](#)  
for 102 virtual tour



Suite 105

[CLICK HERE](#)  
for 105 virtual tour



LEARN MORE ABOUT THIS PROPERTY  
[MarketRealEstate.com](http://MarketRealEstate.com)

**TODD WALSH, CCIM**

303 444 5040  
Todd@MarketRealEstate.com

**NATE LITSEY**

303 444 4024  
Nate@MarketRealEstate.com

